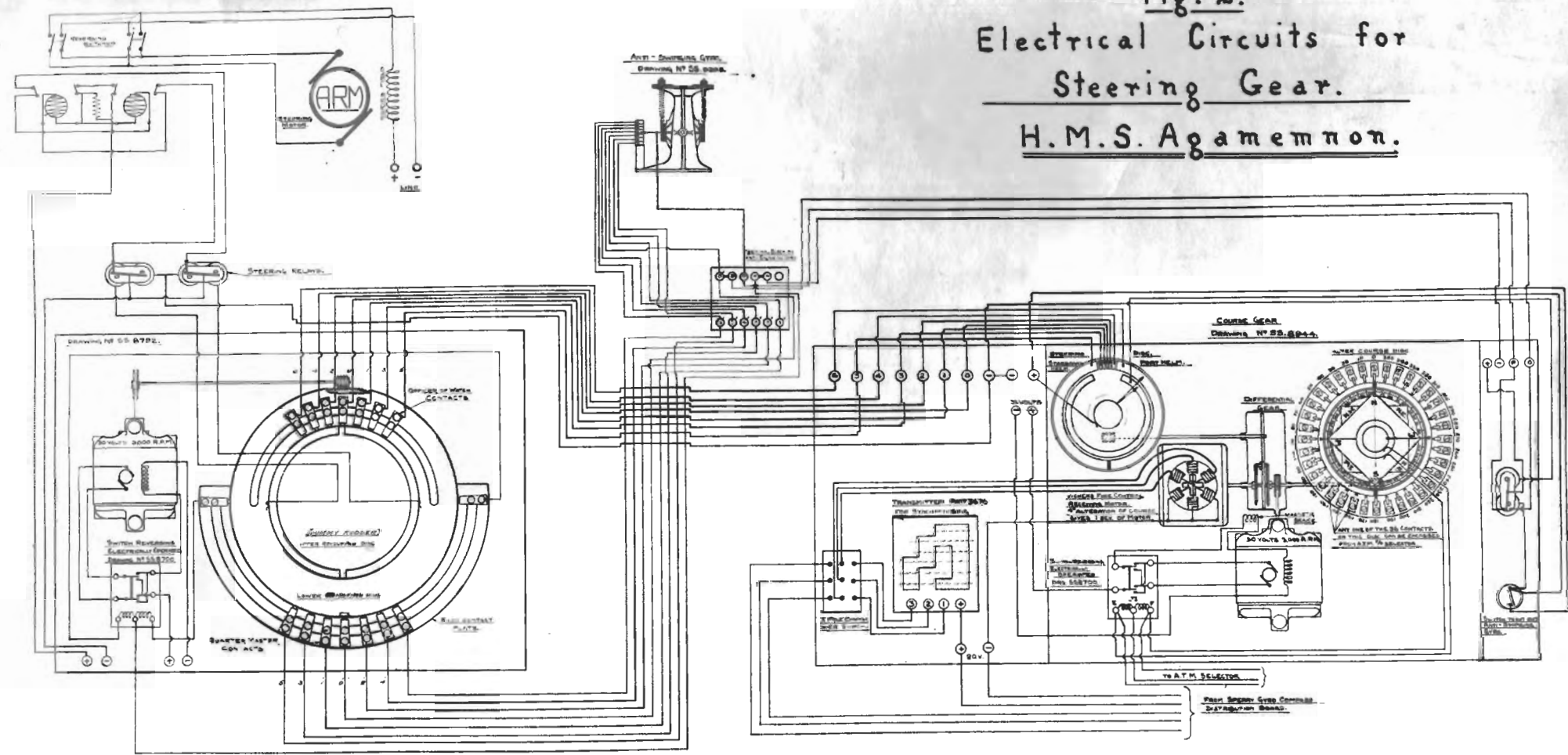


Fig. 1.

Diagrammatic Sketch of  
D/C Steering Gear.

Fig. 2.  
Electrical Circuits for  
Steering Gear.  
H.M.S. Agamemnon.



ELECTRIC CIRCUITS FOR CONTROL OF STEAM REGULATING VALVES.

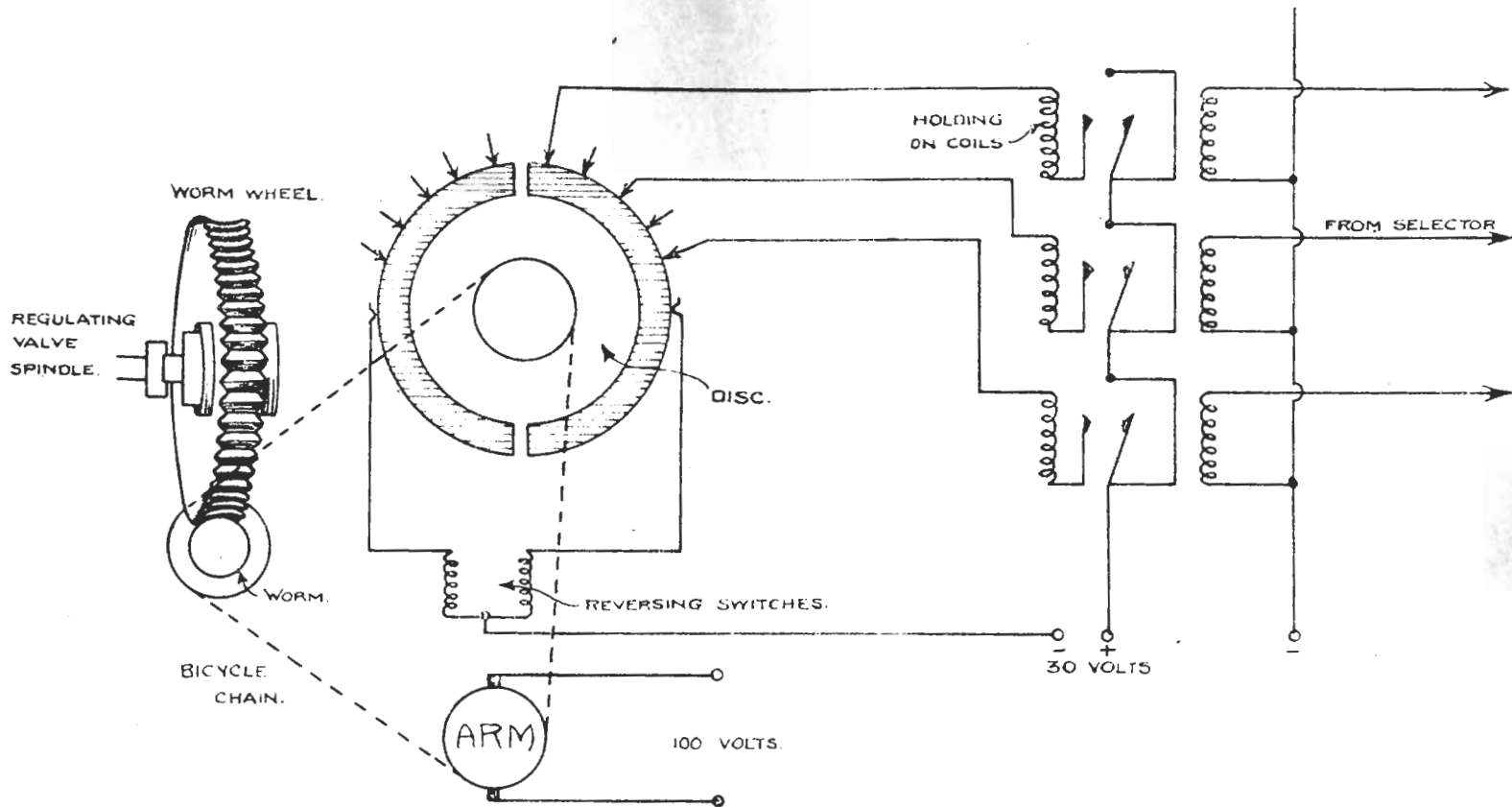
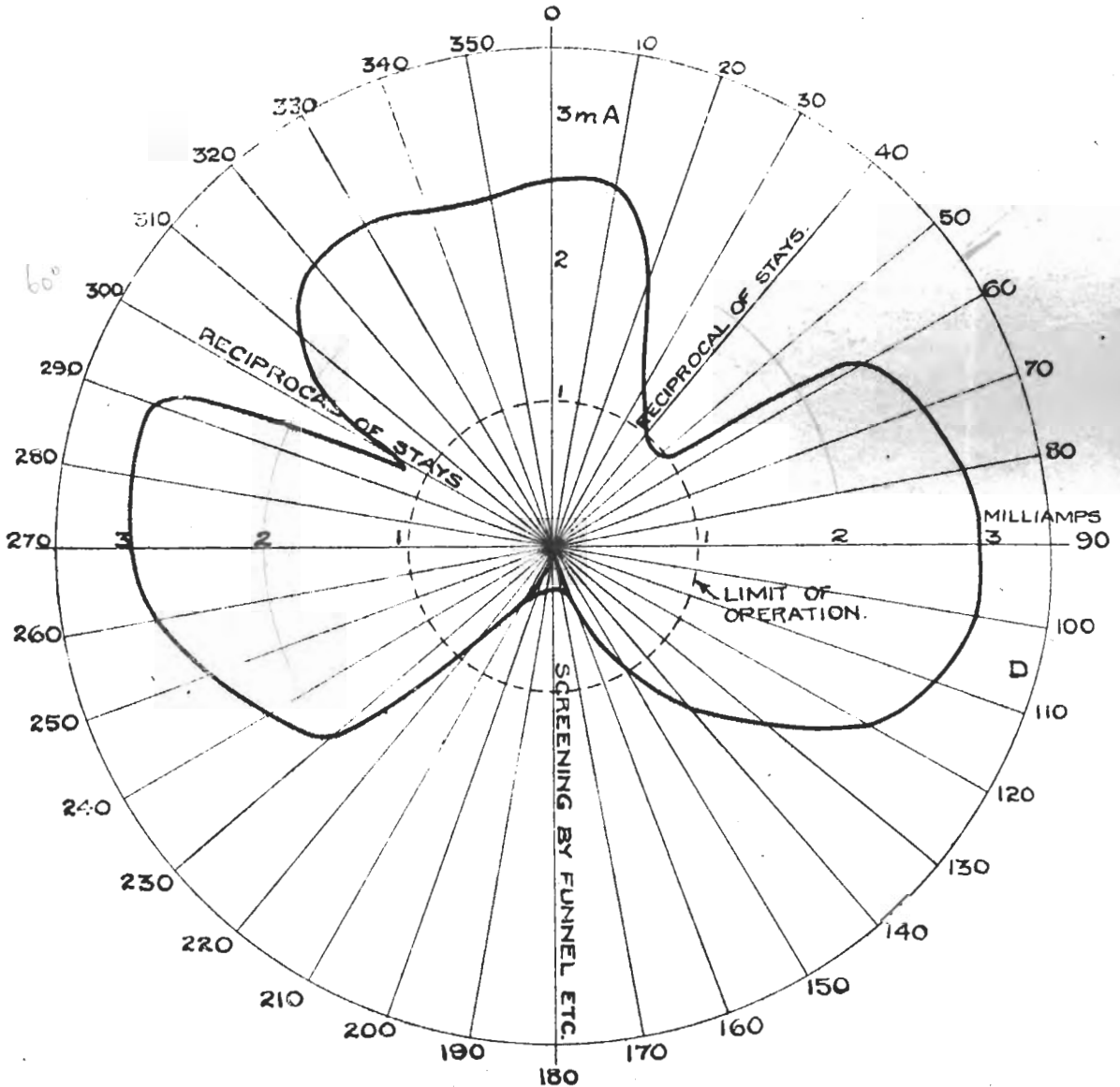


Fig 3.

H.M.S. SNAPDRAGON.

RANGE 1 - 1.5 MILES.

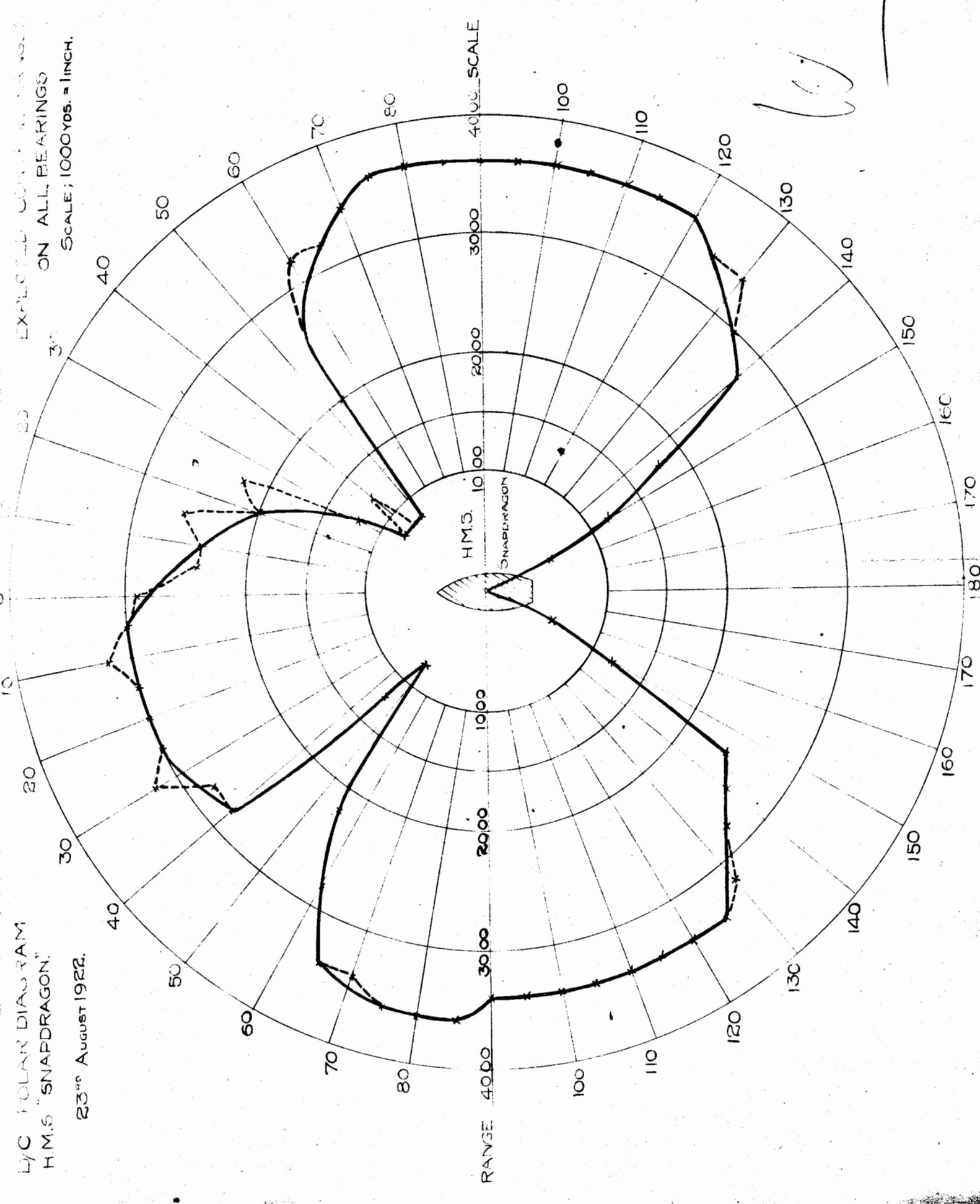
AERIAL CURRENT 1.3 AMPS.



D/C POLAR DIAGRAM  
H.M.S. "SNAPDRAGON"

23<sup>RD</sup> August 1922.

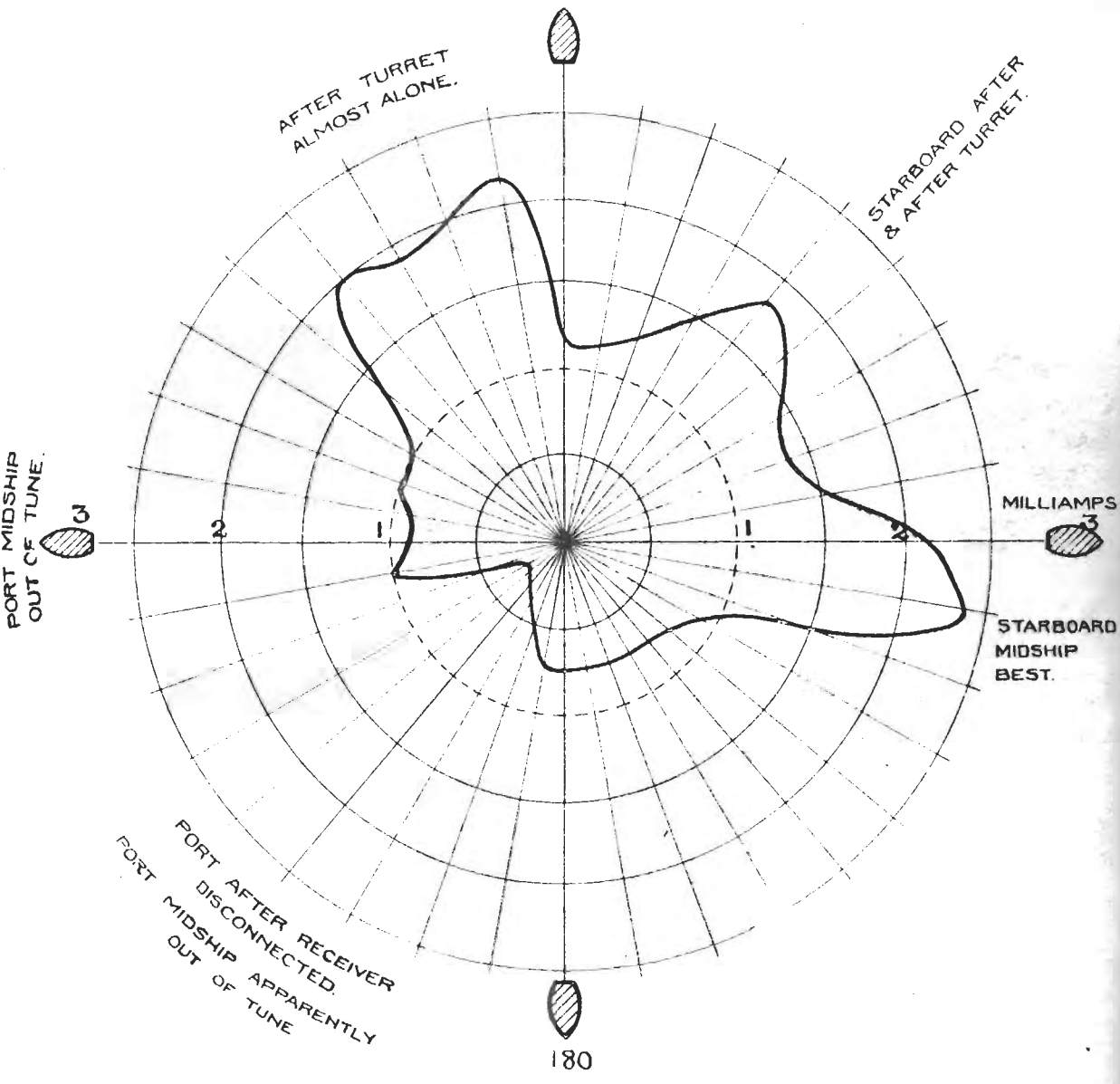
ON ALL BEARINGS  
SCALE; 1000 YDS. = 1 INCH.



# H.M.S. AGAMEMNON'S

1ST SWING.

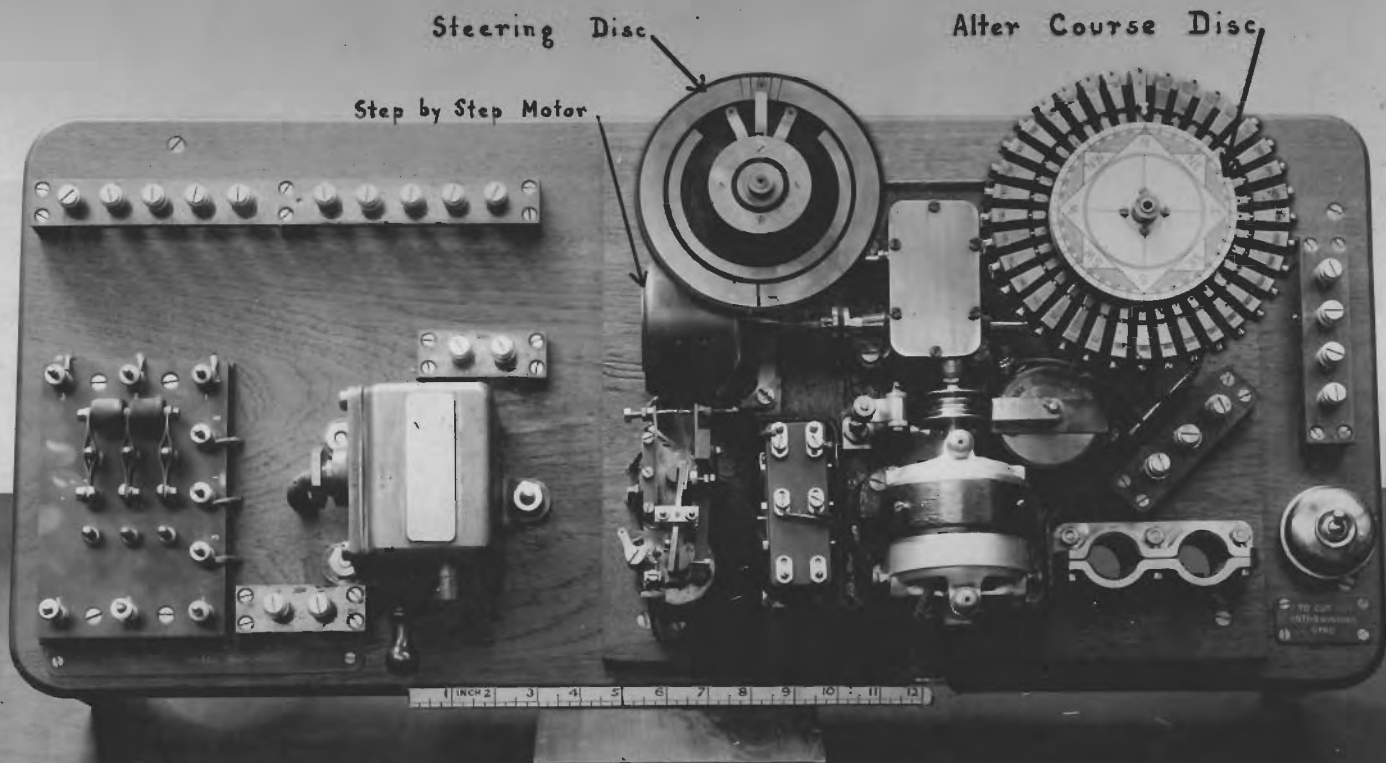
0



ANTRIM.



Fig. 6.  
A.T.M. C° SELECTOR. (100-LINE.)



SIGNAL SCHOOL'S  
PHOTO NO. 55431.

Fig. 7.  
ALTER COURSE & STEERING DISCS.



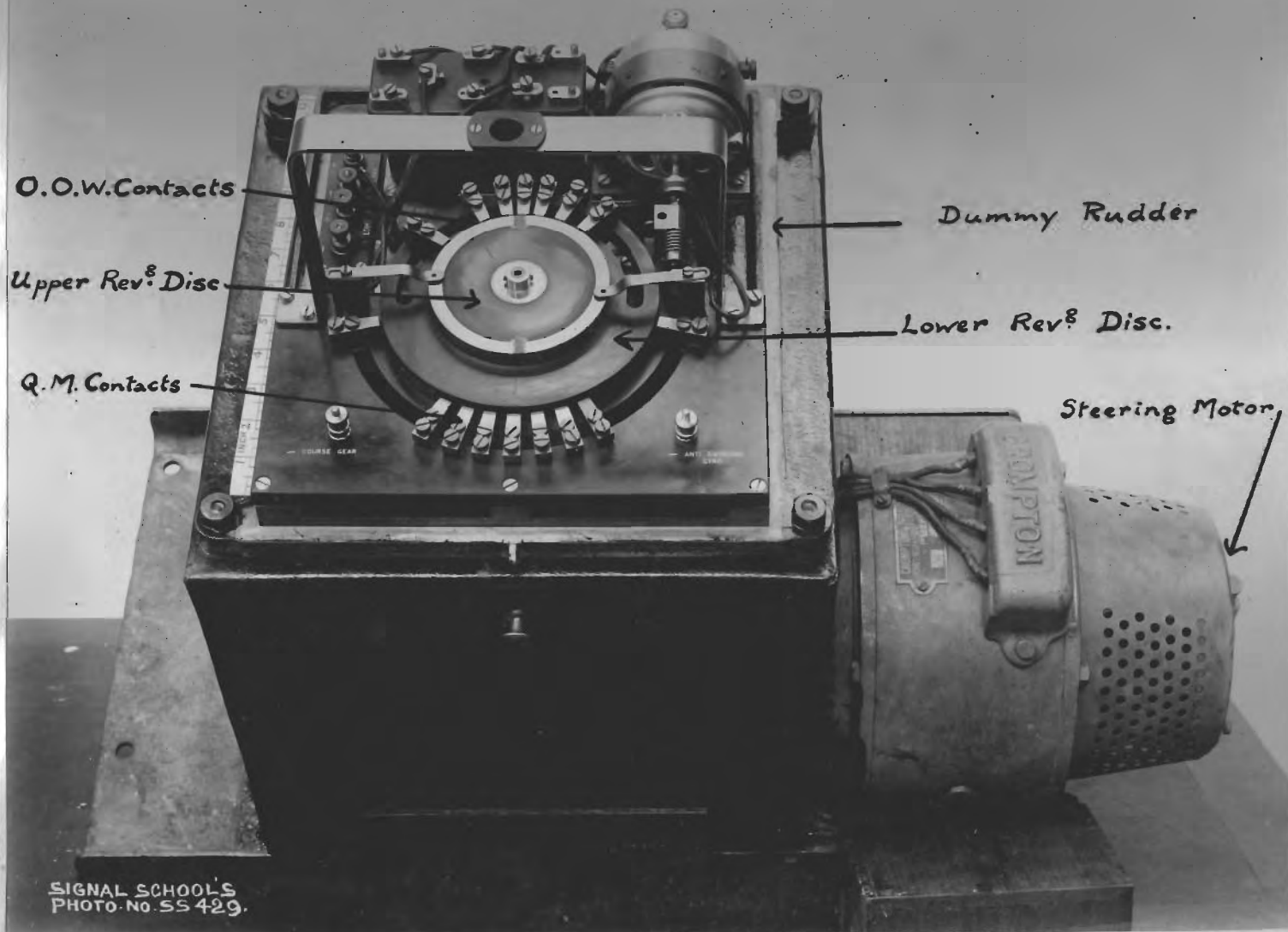
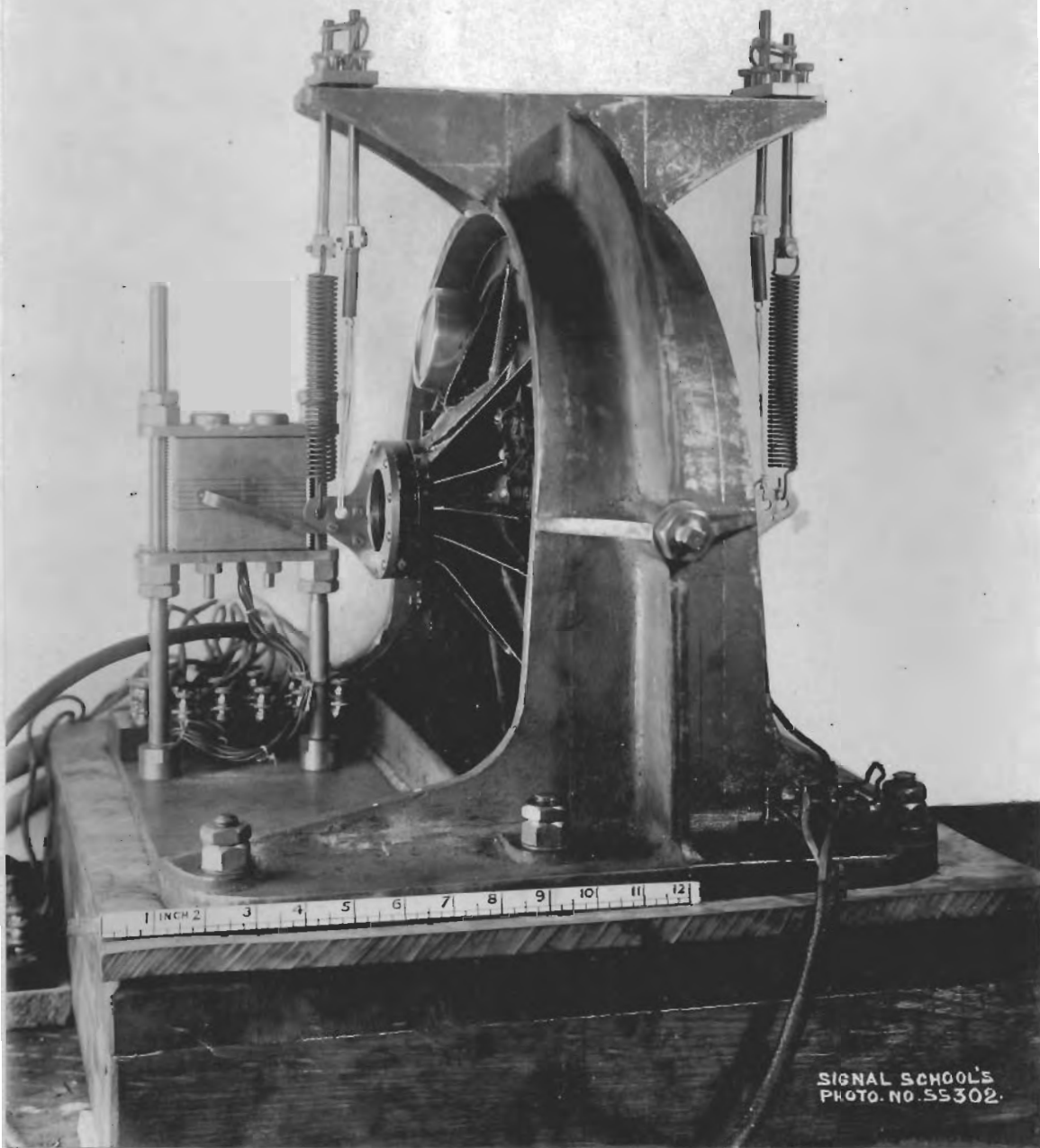


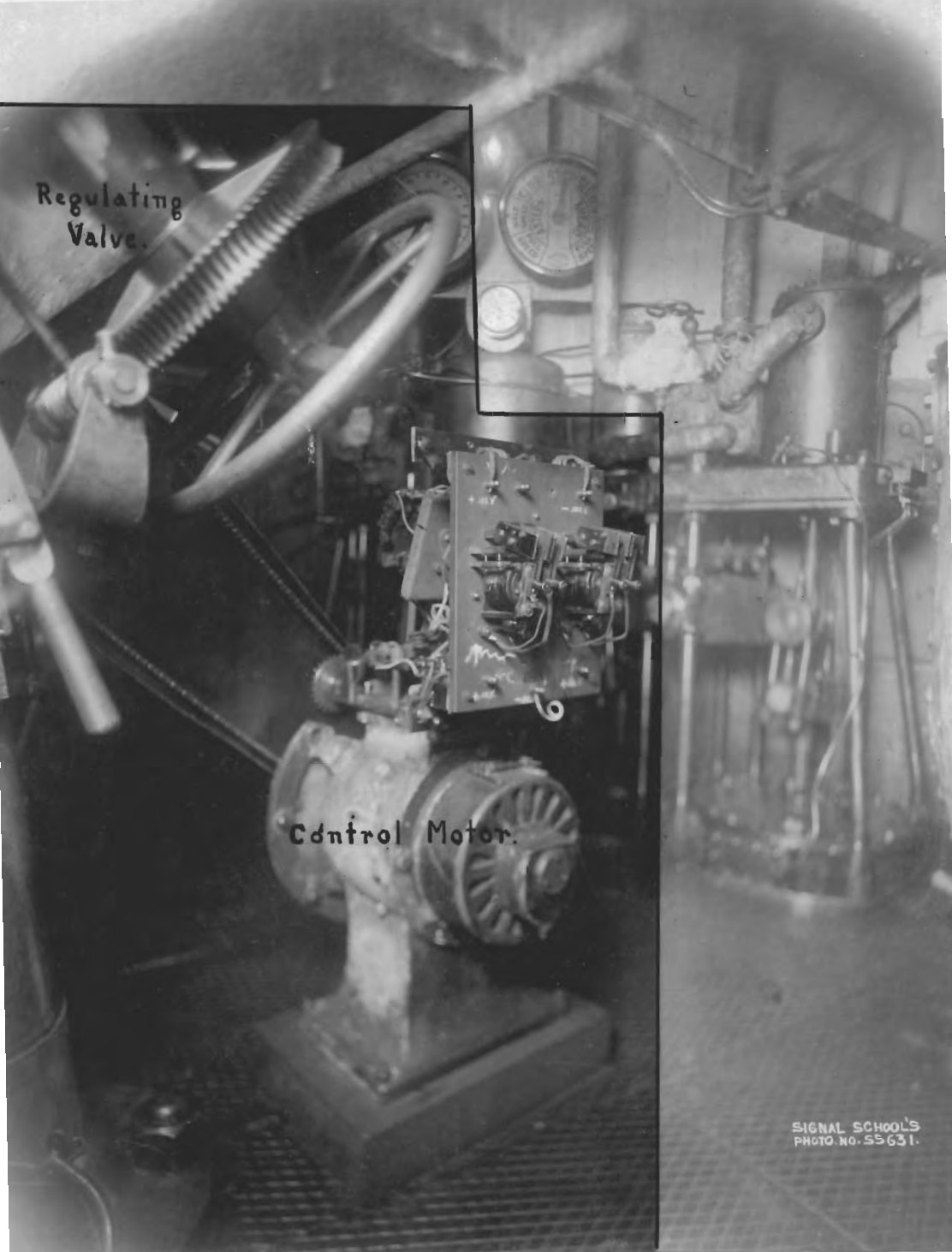
Fig. 8.  
DUMMY RUDDER & STEERING MOTOR.



SIGNAL SCHOOL'S  
PHOTO. NO. 55302.

Fig. 9.

ANTI-SWINGING GYRO.



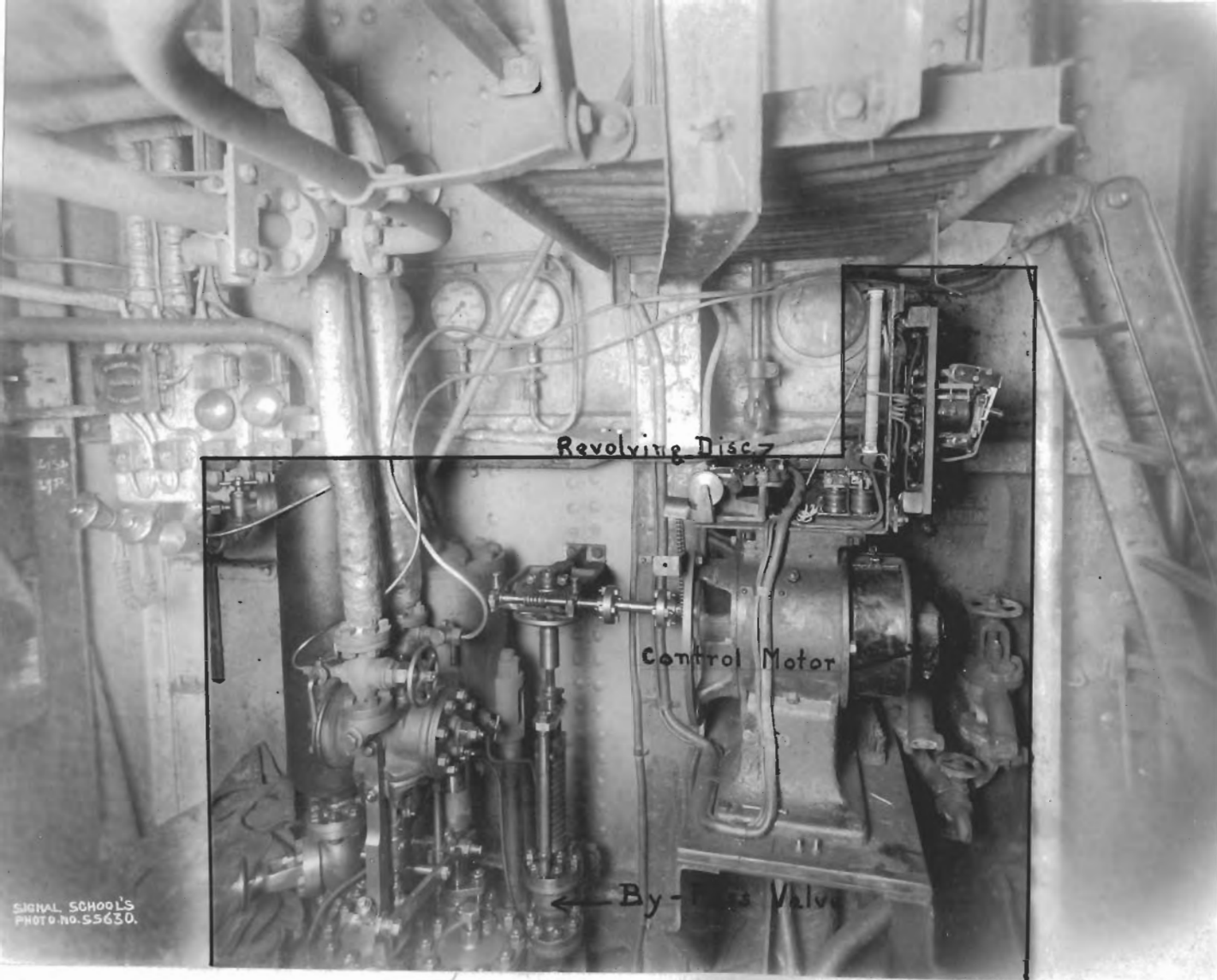
Regulating Valve.

Control Motor.

SIGNAL SCHOOL'S  
PHOTO. NO. 55631.

Fig. 10.

MAIN STEAM VALVE CONTROL.



Revolving Disc

Control Motor

By-pass Valve

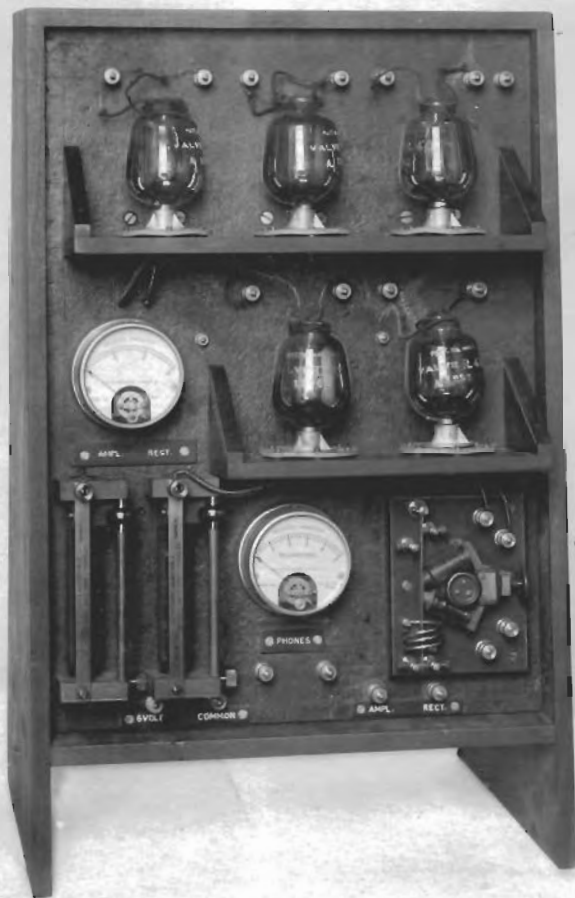
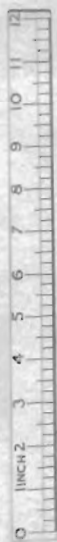
Fig 11.

OIL FUEL VALVE CONTROL.



SIGNAL SCHOOL'S  
PHOTO. NO. SS 467.

Fig. 12.  
S/W RECEIVER Q1. (1st Pattern)



Receiving  
Relay

SIGNAL SCHOOLS  
PHOTO. NO. 55 469

Fig. 13.  
AMPLIFIER N5.

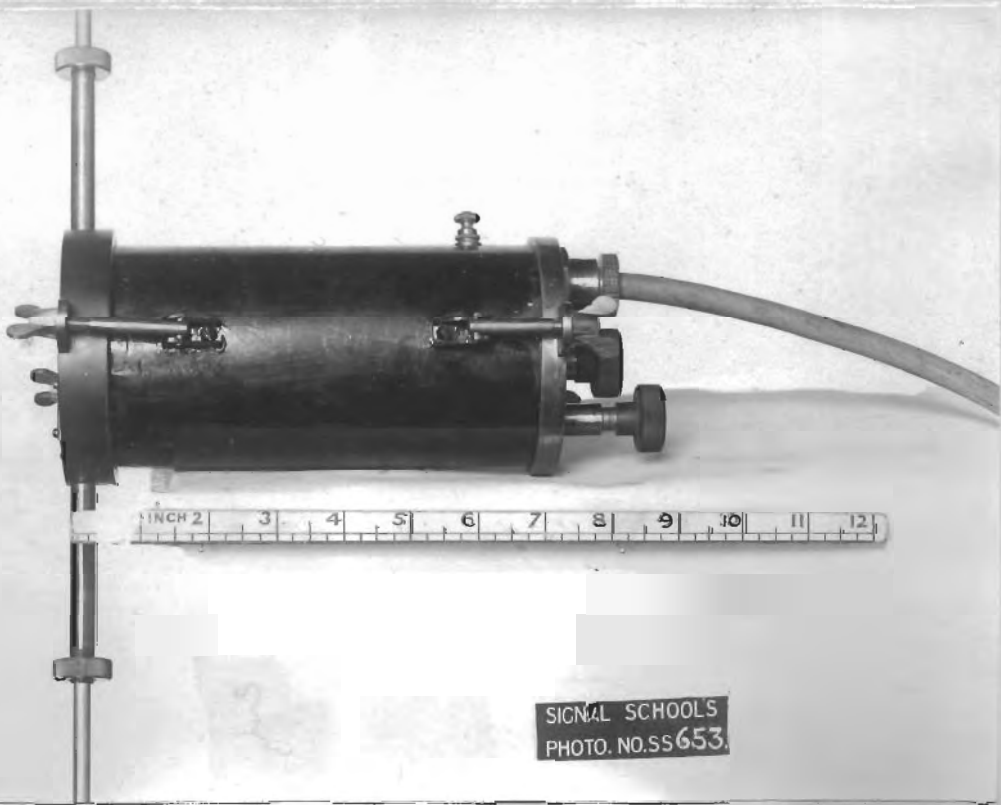


FIG. 12A.

RECEIVER Q.1.

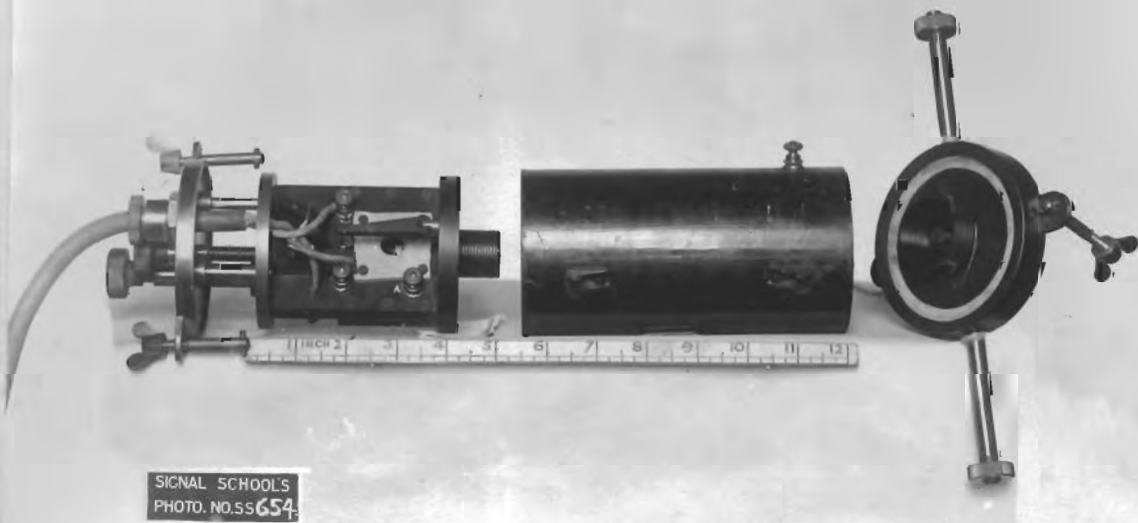


FIG. 12B

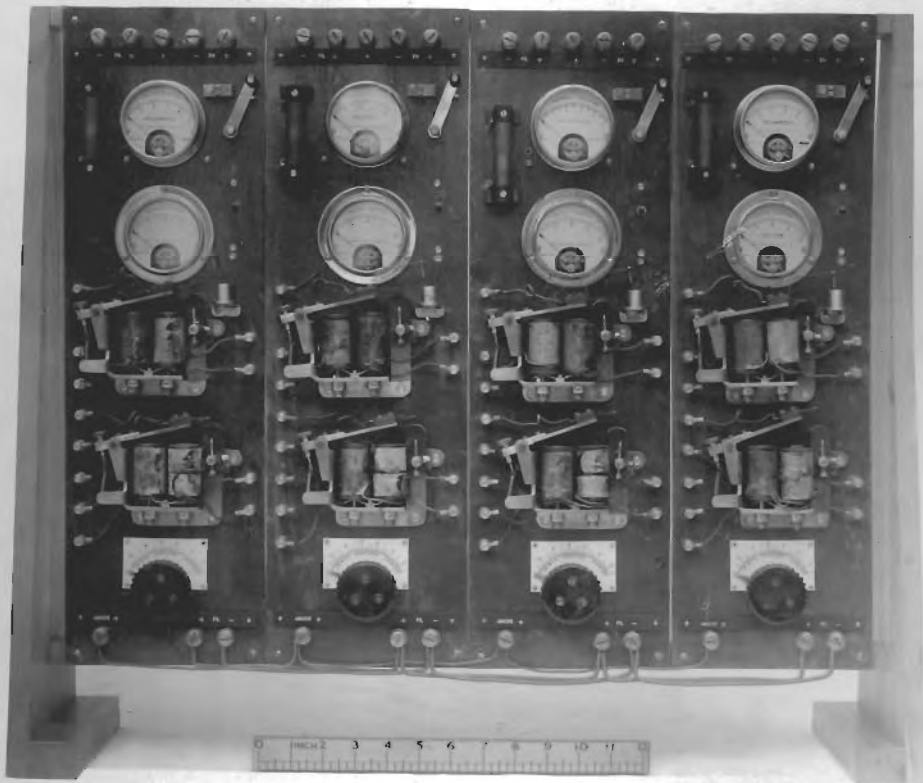
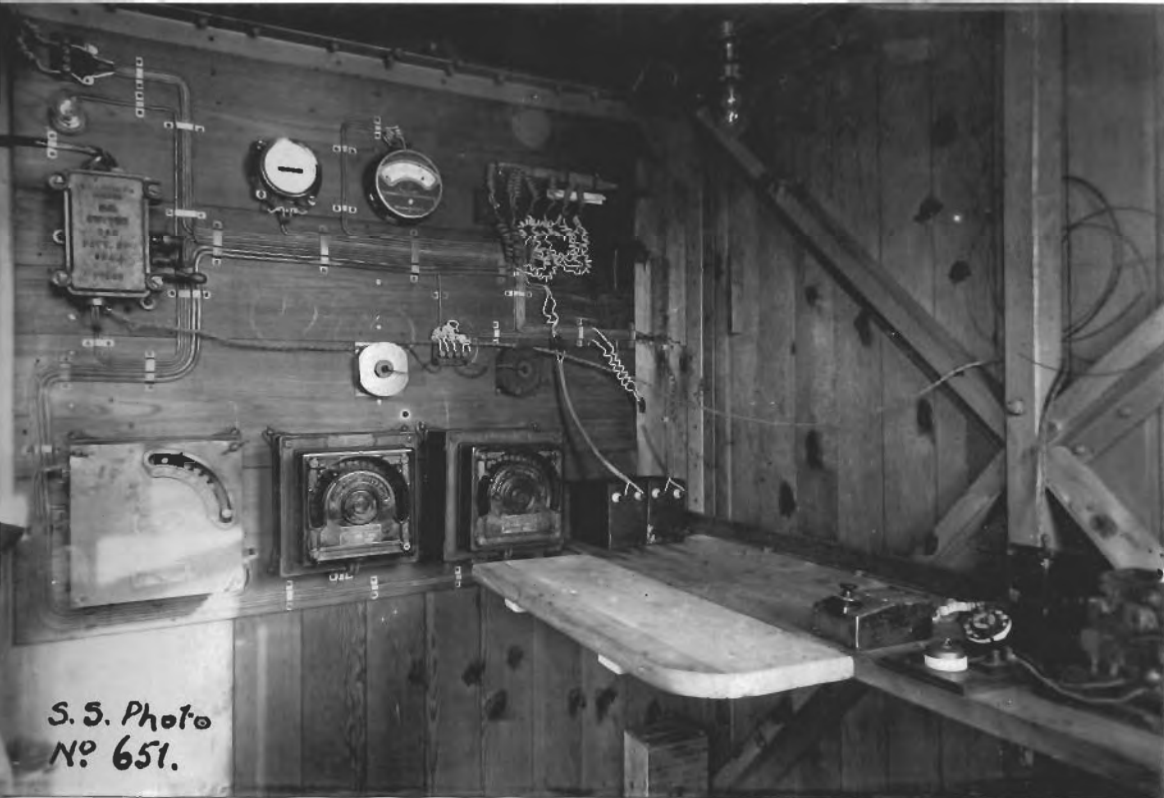


FIG. 13A.

*AUTOMATIC CUT-OUT PANEL.*





S. S. Photo  
No 651.

Fig. 15.

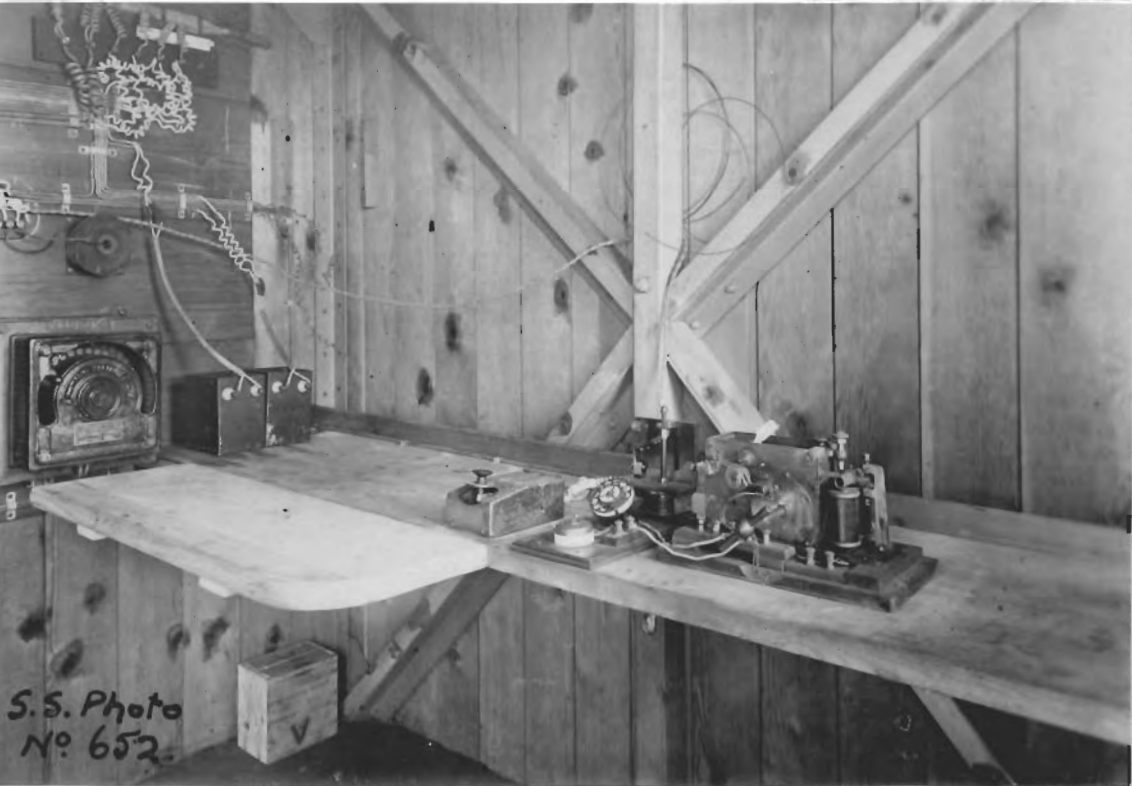
GENERAL VIEW OF CONTROL OFFICE.



S.S. Photo  
No. 650

Fig. 14.

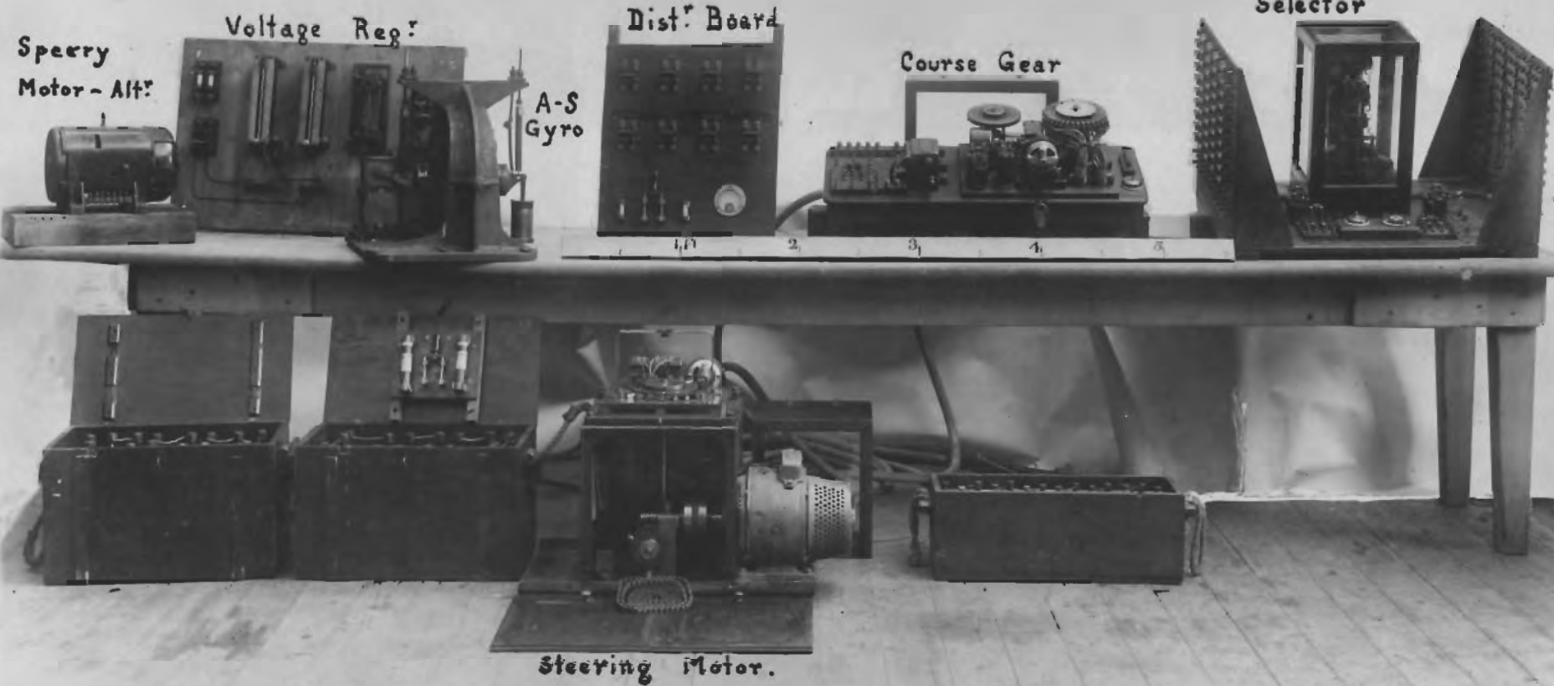
TRANSMITTER BOX & AERIAL  
H.M.S. "SNAPDRAGON".



S.S. Photo  
No. 652.

Fig. 16.

TRANSMITTING DIAL.



Speery  
Motor - Alt?

Voltage Reg?

A-S  
Gyro

Dist? Board

Course Gear

Selector

Steering Motor.

SIGNAL SCHOOL'S  
PHOTO. NO. 33461.

Fig. 17.  
STEERING GEAR FOR H.M.S. "AGAMEMNON"



Fig. 18.

RECEIVERS FITTED IN H.M.S. "AGAMEMNON".

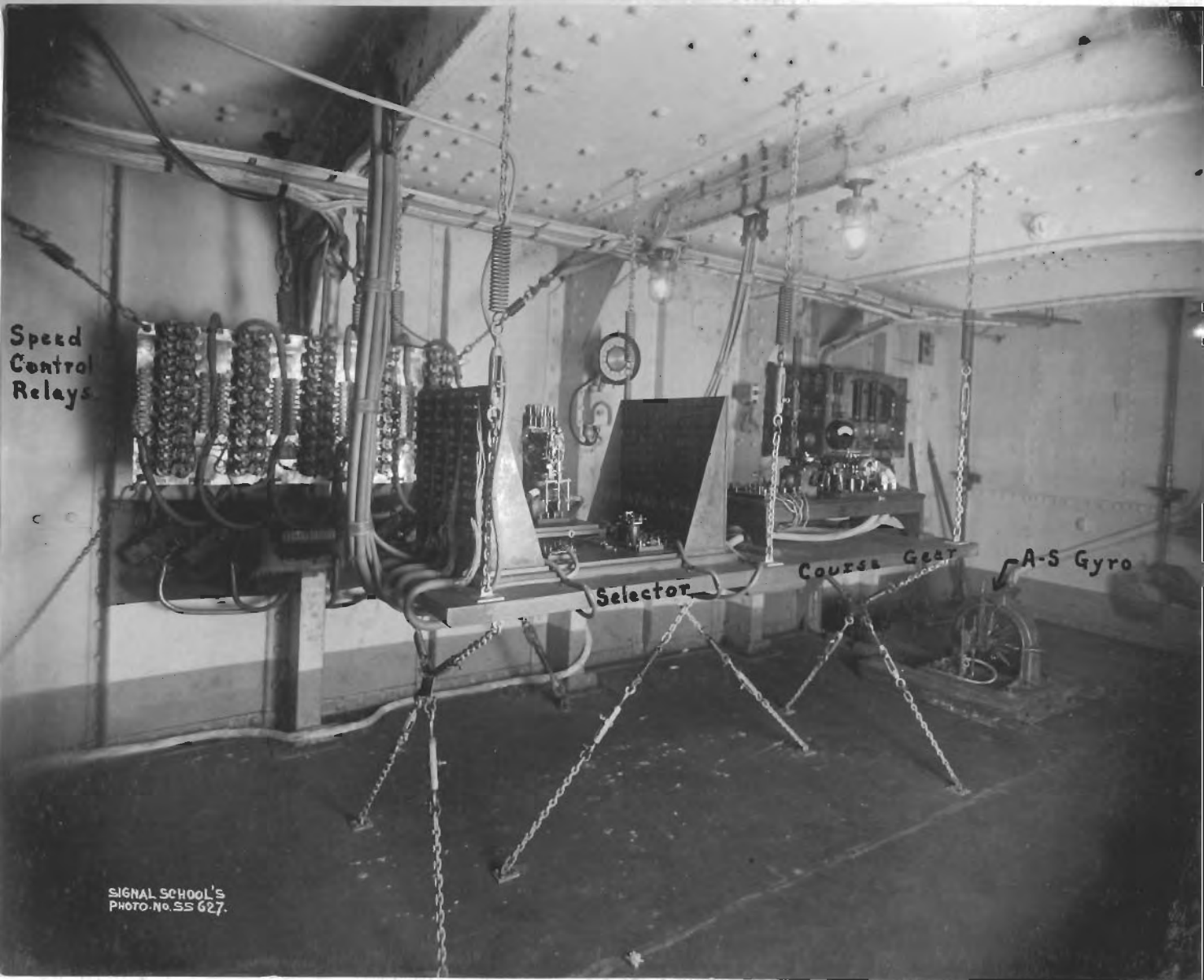
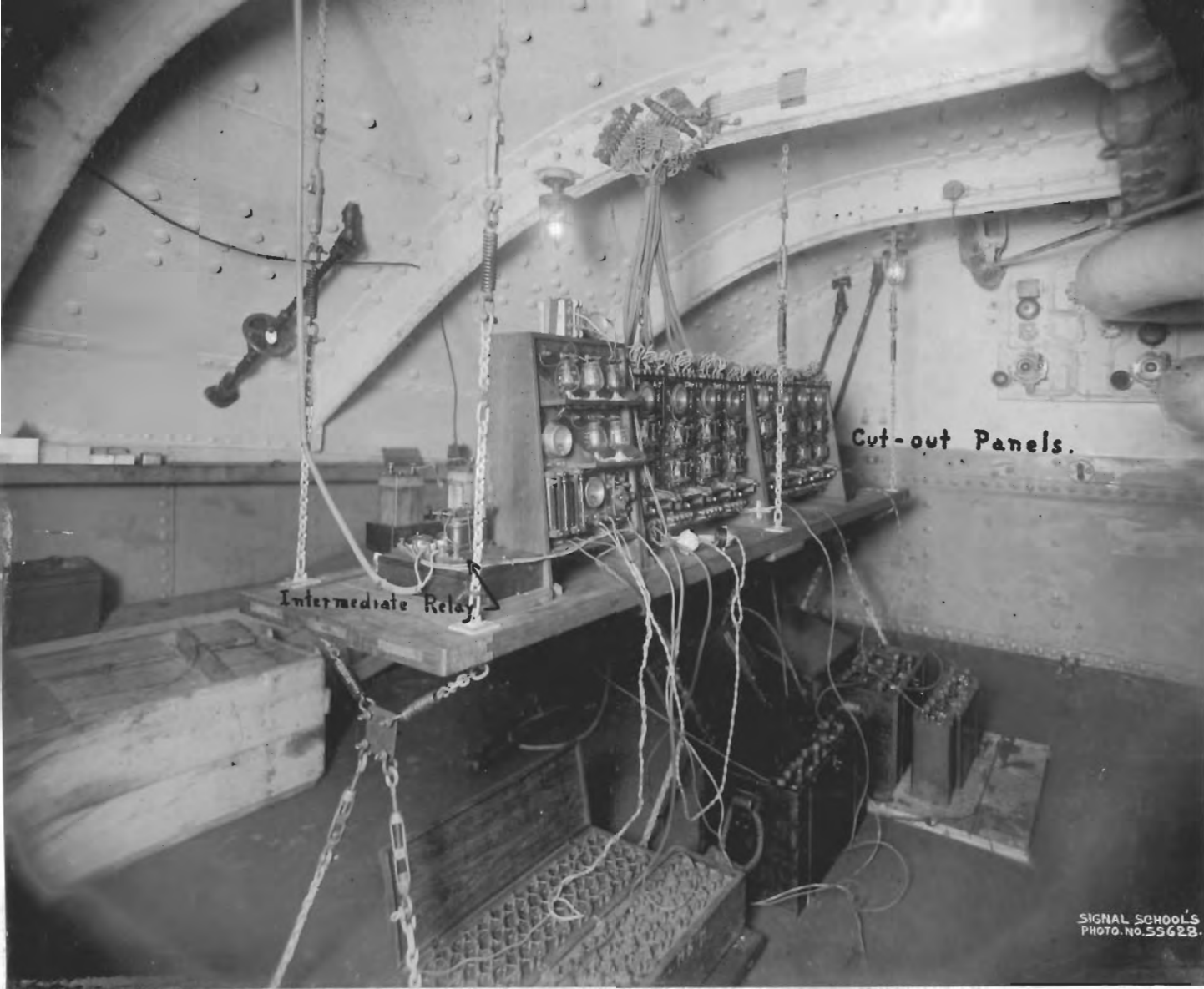


Fig. 19.  
CONTROL ROOM IN H.M.S. "AGAMEMNON".



Intermediate Relay

Cut-out Panels.

SIGNAL SCHOOL'S  
PHOTO. NO. 55628.

Fig. 20.

W/T ROOM IN H.M.S. "AGAMEMNON"



SIGNAL SCHOOL'S  
PHOTO NO. 55629.

Fig. 21.  
BATTERY ROOM IN H.M.S. "AGAMEMNON"





Steering Motor

Dummy Rudder

SIGNAL SCHOOL'S  
PHOTO. NO. 5563B.

Fig. 22.  
LOWER G.T. IN H.M.S. "AGAMEMNON".